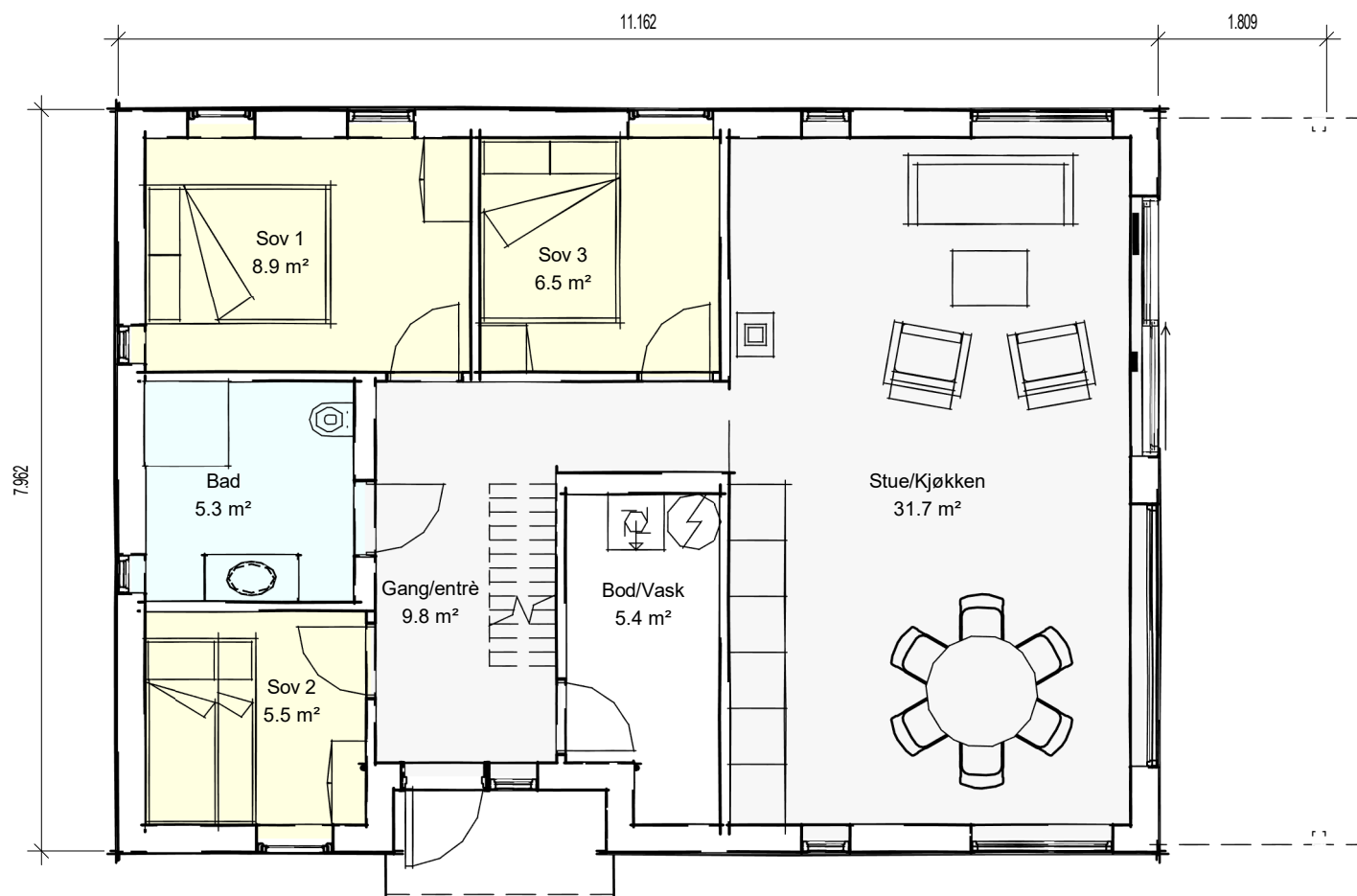
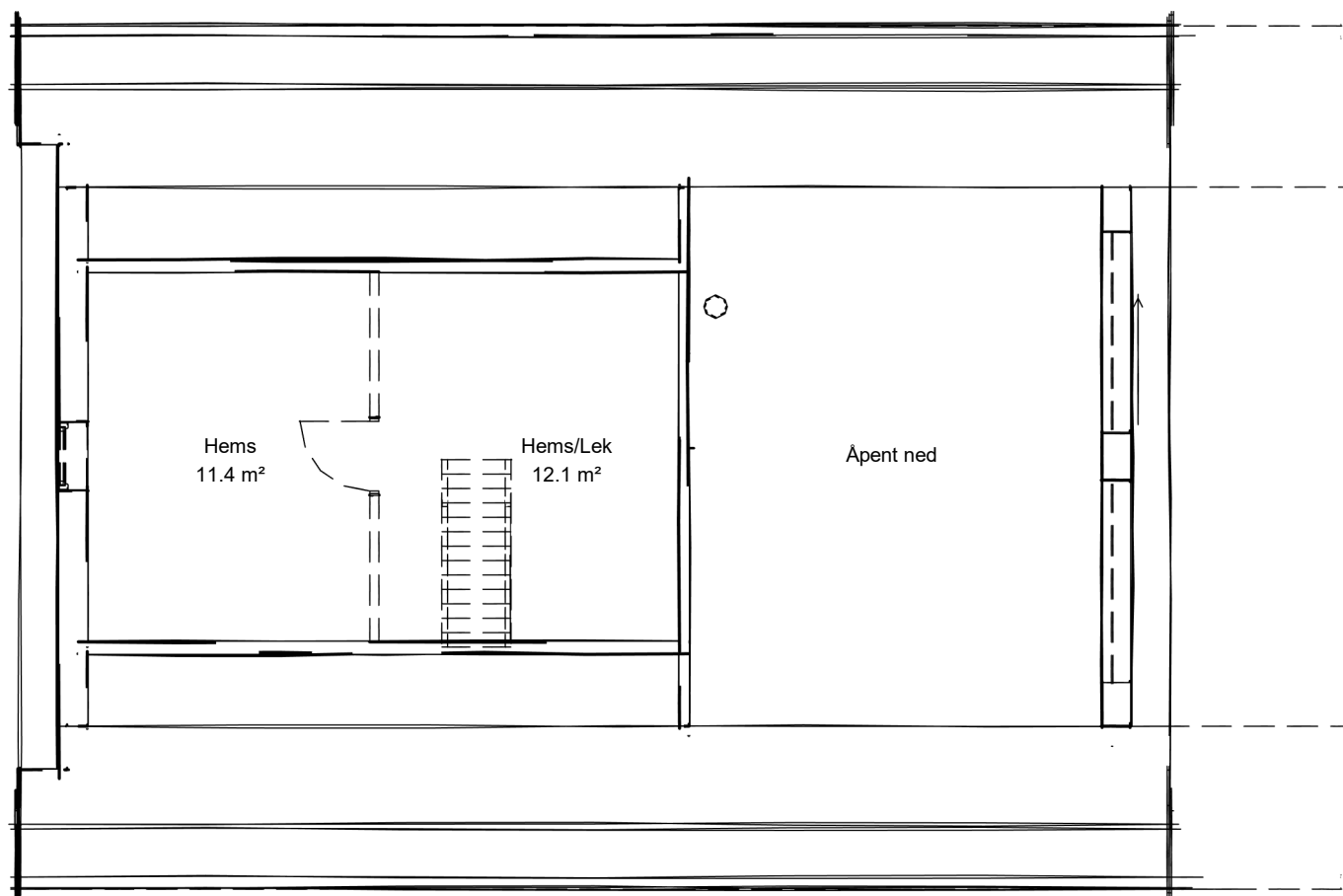


ENDELI 76b - Rettvendt



Hovedplan



Hems

BRA:76.2 m²(Ev. overbygg: +12.6 m² overb. BRA) | BYA:87.3 m²(BYA m. overbygg: 101.4 m² | Hemsareal(tilvalg):23.5 m²

(Stiplet linje = tilvalg bygningskropp)

VERSJON 1 08.04.2021